

# Towards Climate Change Adaptation - Strategies in the Baltic Sea Region

Recommendations for Policy-Making

1. Need of Policy-making
2. Approaches to Adaptation in the Baltic Sea Region
3. Recommendations for Policy-making

- ≡ high probability of damage
- ≡ missing perception of the threat  
i.e. cigarette smoke, graduate climate change  
and its impacts

⇒ „Cassandra“ Syndrome

⇒ long-term responsibility needs to be strengthened

## Characteristics:

- ≡ cross-sectoral
- ≡ interregional
- ≡ intergenerational

# Tools for Policy-making



regulatory  
and juridical  
instruments

*control, limit or  
simply forbid  
undesirable  
action*

fiscal  
instruments

*enhance  
adequate  
action and  
behaviour*

optimising  
operation  
procedures

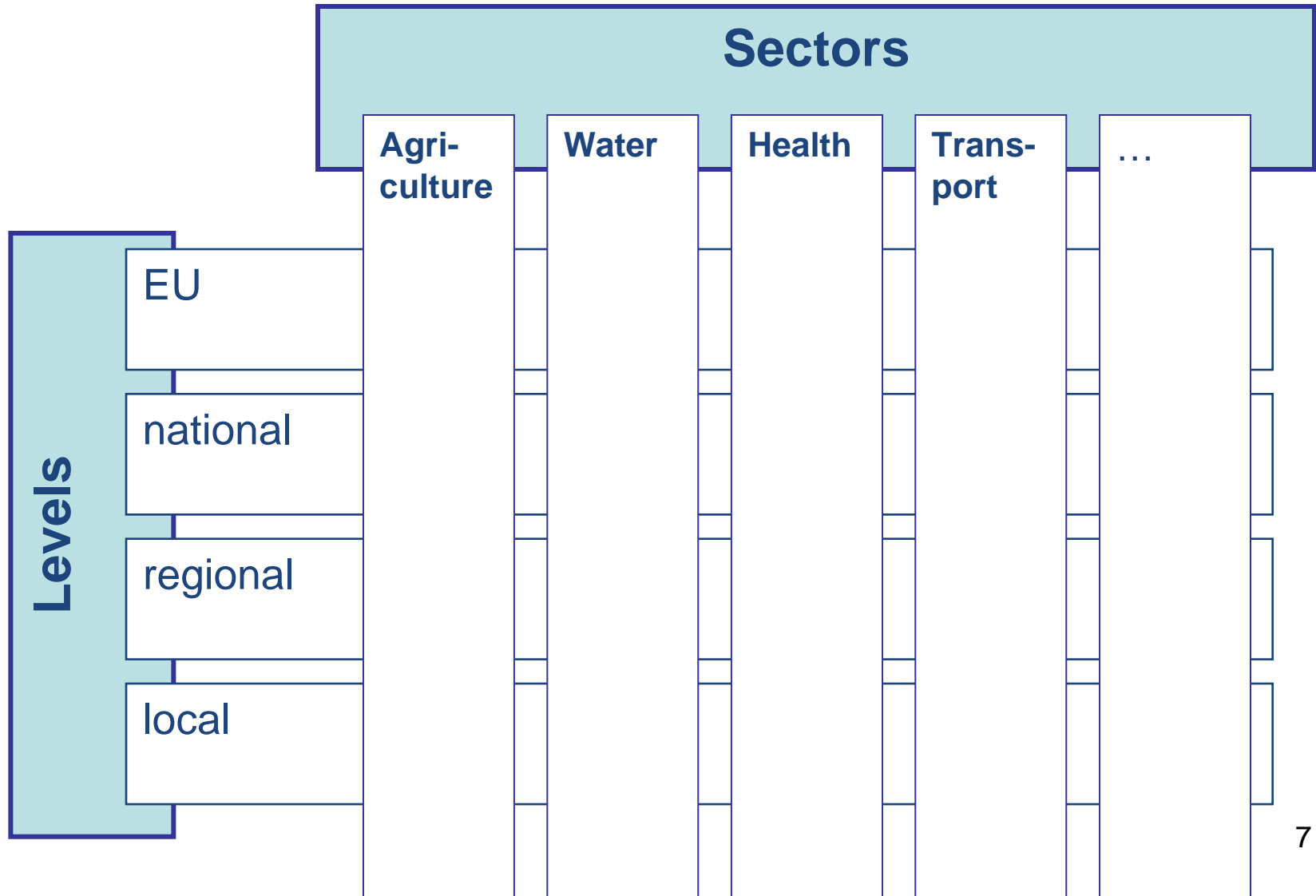
*fosters  
coordination &  
integrated  
approaches*

information,  
education &  
participation

*support  
awareness  
raising & the  
change of  
human action*



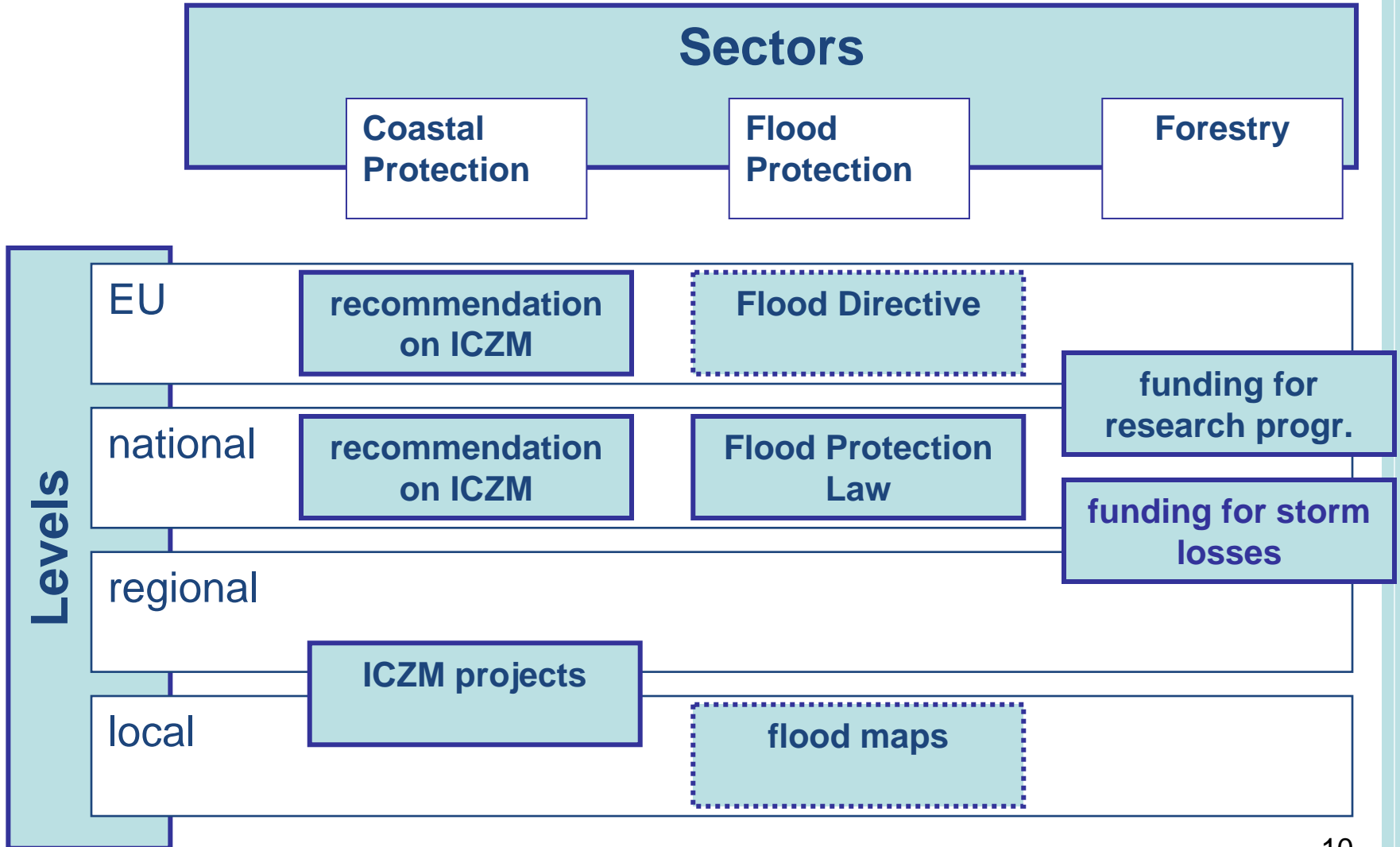
# Approaches to Adaptation Strategies



- ≡ 2004: EEA Report: Impacts of Europe's Changing Climate
- ≡ 2006: 2nd European Climate Change Programme
- ≡ 2007: Green Paper on Adaptation to Climate Change
- ≡ structural funding (i.e. Interreg projects)
- ≡ Flood Directive

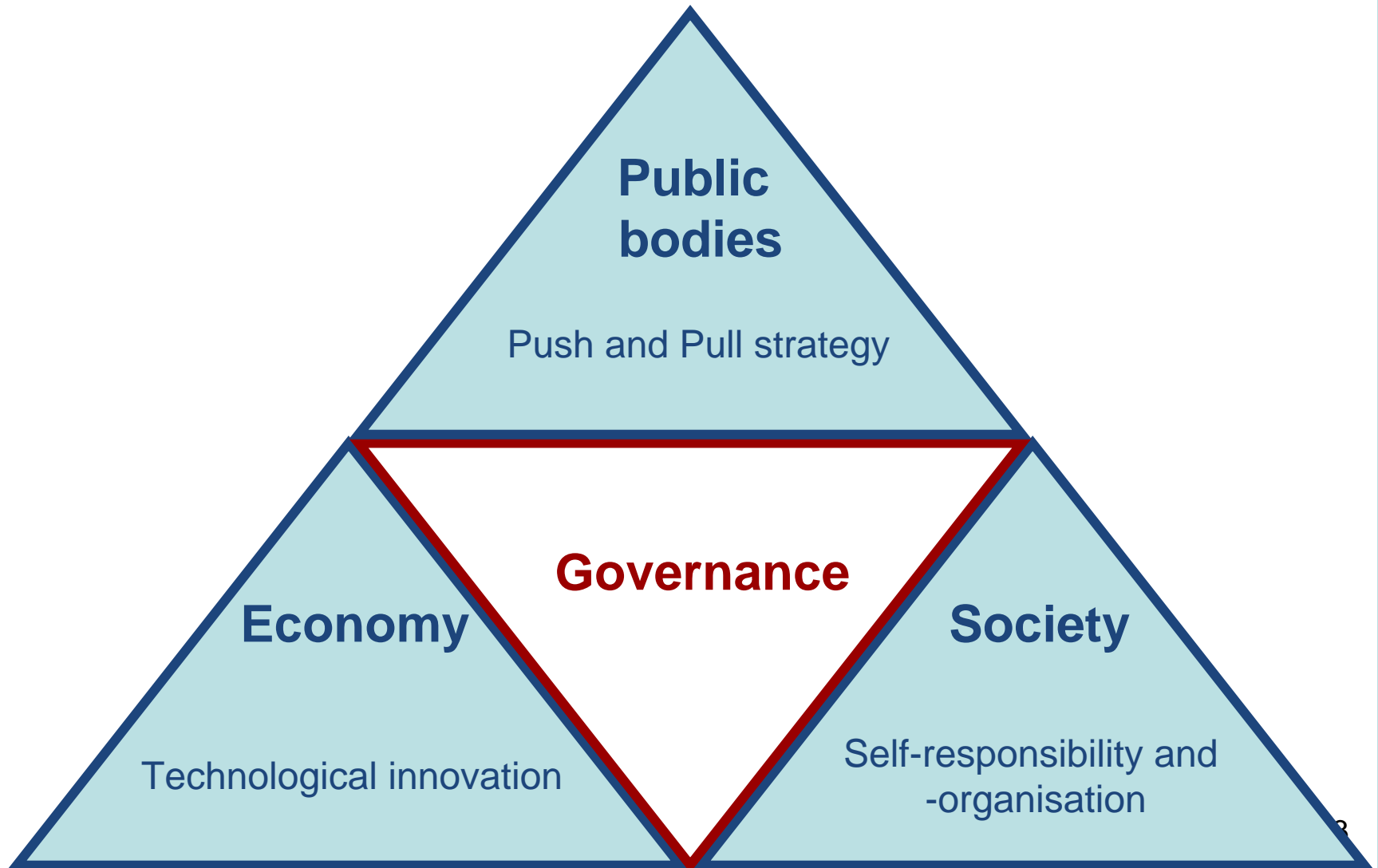
- ≡ Finnish National Strategy for Adaptation to Climate Change
- ≡ German Competence Centre on Climate Change Adaptation

# Examples of Sectoral Approaches



- ≡ national strategies only in their beginnings
- ≡ few sectoral approaches
- ≡ importance of EU initiatives
- ≡ hardly any initiatives at local level





# Integration into existing Policies i.e. Spatial Planning

---



- ≡ cooperation and participation at different levels
- ≡ existing instruments and procedures (i.e. Strategic Environmental Assessment)
- ≡ binding regulations (i.e. building code)

# Tackling Climate Change Impacts



**Hazard-based approach**

How to strengthen resilience against extreme weather events?

**ASTRA project:  
Winter Storm Study**

**Vulnerability-based approach**

“Who is vulnerable to what, in what way and where?”

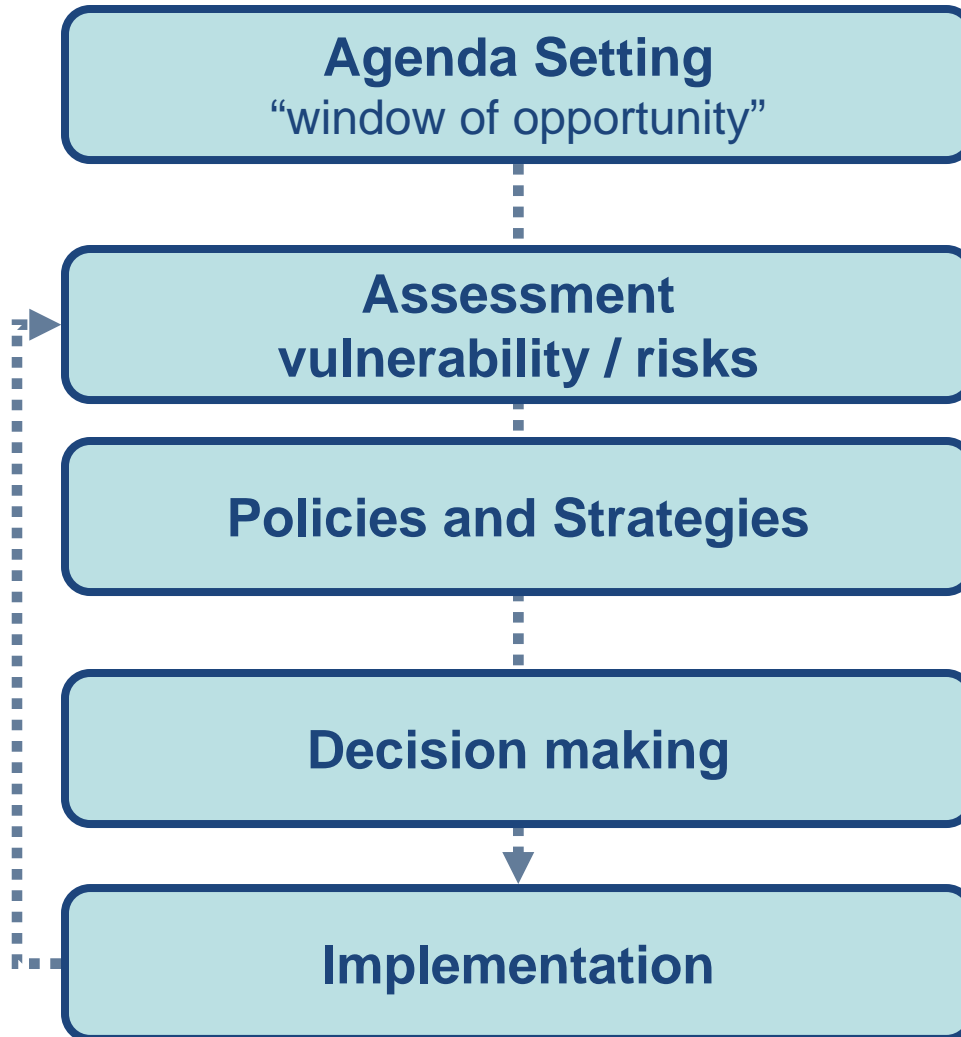
**ASTRA project:  
Lithuanian regional workshops**

**Policy-based approach**

To what extent do existing policies consider adaptation needs?

**ASTRA project:  
Assessment of existing policies**

# Step-wise Approach



Need for

- ≡ awareness rising
- ≡ education

Both should become a matter of course



- ≡ Influencing policies in member countries through further
  - studies and research activities
  - recommendations
  - monitoring activities
  - financial funding

# Activities at BSR Level

---



- ≡ communication platform
- ≡ research activities
- ≡ tackling joint problems
  - i.e. fishery, coastal protection, transport, tourism, ...

- ≡ assessing vulnerability and existing policies
- ≡ creating capable organisational structures
- ≡ supporting legal framework
- ≡ providing financial funding
- ≡ securing lasting information channels

# Local and Regional Tasks

---



- ≡ feedback on concrete adaptation needs
- ≡ implementation of measures and strategies
- ≡ capacity building and empowerment

Thank you!



Jörg Knieling / Katrin Hilpert  
HafenCity University, Hamburg  
Department for Urban and Regional  
Planning

Fon: ++ 49 (0) 40 / 42878 – 3009

E-mail: [joerg.knieling@hcu-hamburg.de](mailto:joerg.knieling@hcu-hamburg.de)

[www.hcu-hamburg.de](http://www.hcu-hamburg.de)